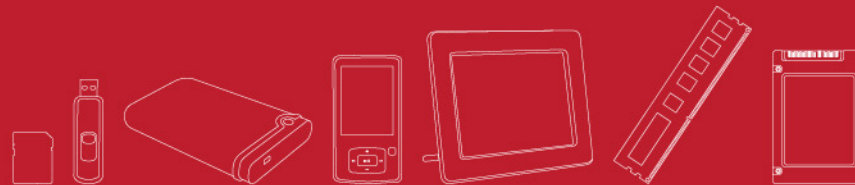




Citi Conference

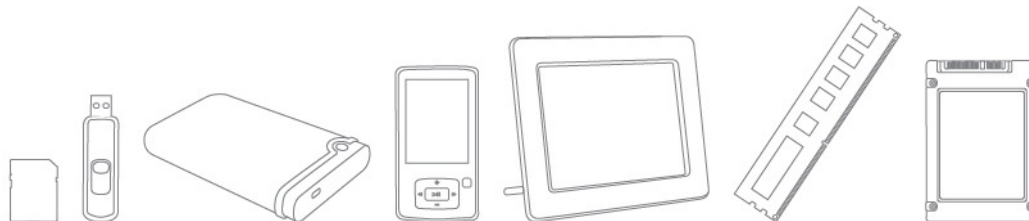
May 9, 2012

Presented by
Steve Chang, VP of Sales



Agenda

- **Company Overview**
- 2012 Q1 Financial Statements
- Product Portfolio
- Marketing Activities
- Transcend Strengths
- Q&A



Company Overview

- Founded in 1988
- HQ in Taipei, Taiwan
- 13 offices in 8 countries
- Went public in Taiwan in May 2001
- Taiwan's Top 20 global brands
- 2400+ employees worldwide

Mr. Peter Shu

Chairman & CEO



Worldwide Offices / Factories



World Class Manufacturing

Taipei, Taiwan

- 11 High-speed SMT lines
- ISO9001 -Certified since year 1997
- ISO14001 -Certified since year 2006
- QC080000 -Certified since year 2006
- OHSAS18001-Certified since year 2009
- TOSHMS -Certified since year 2009



Shanghai, China

- 14 High-speed SMT lines
- ISO 9001-Certified since year 2007
- ISO 14001-Certified since year 2007
- QC080000 -Certified since year 2008

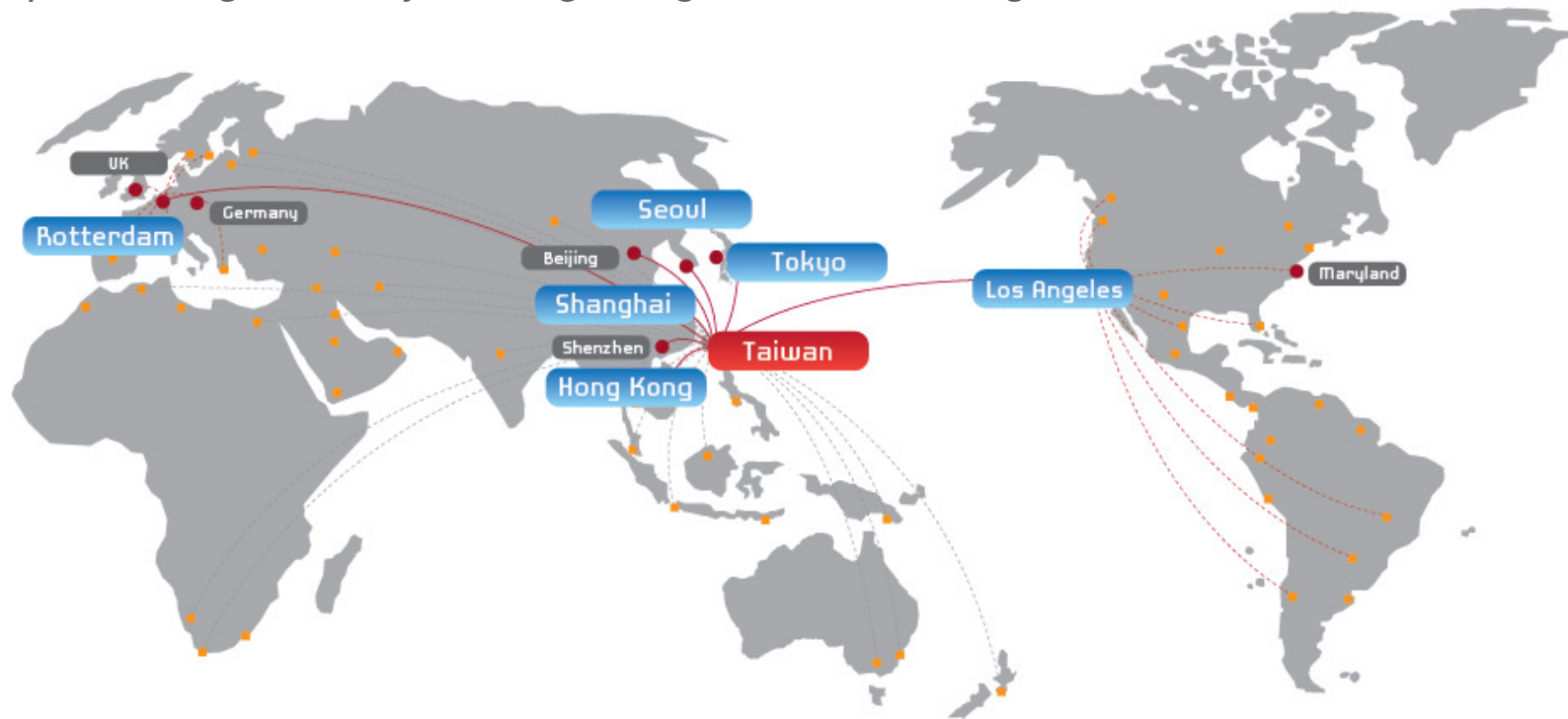


Virtual Warehouse

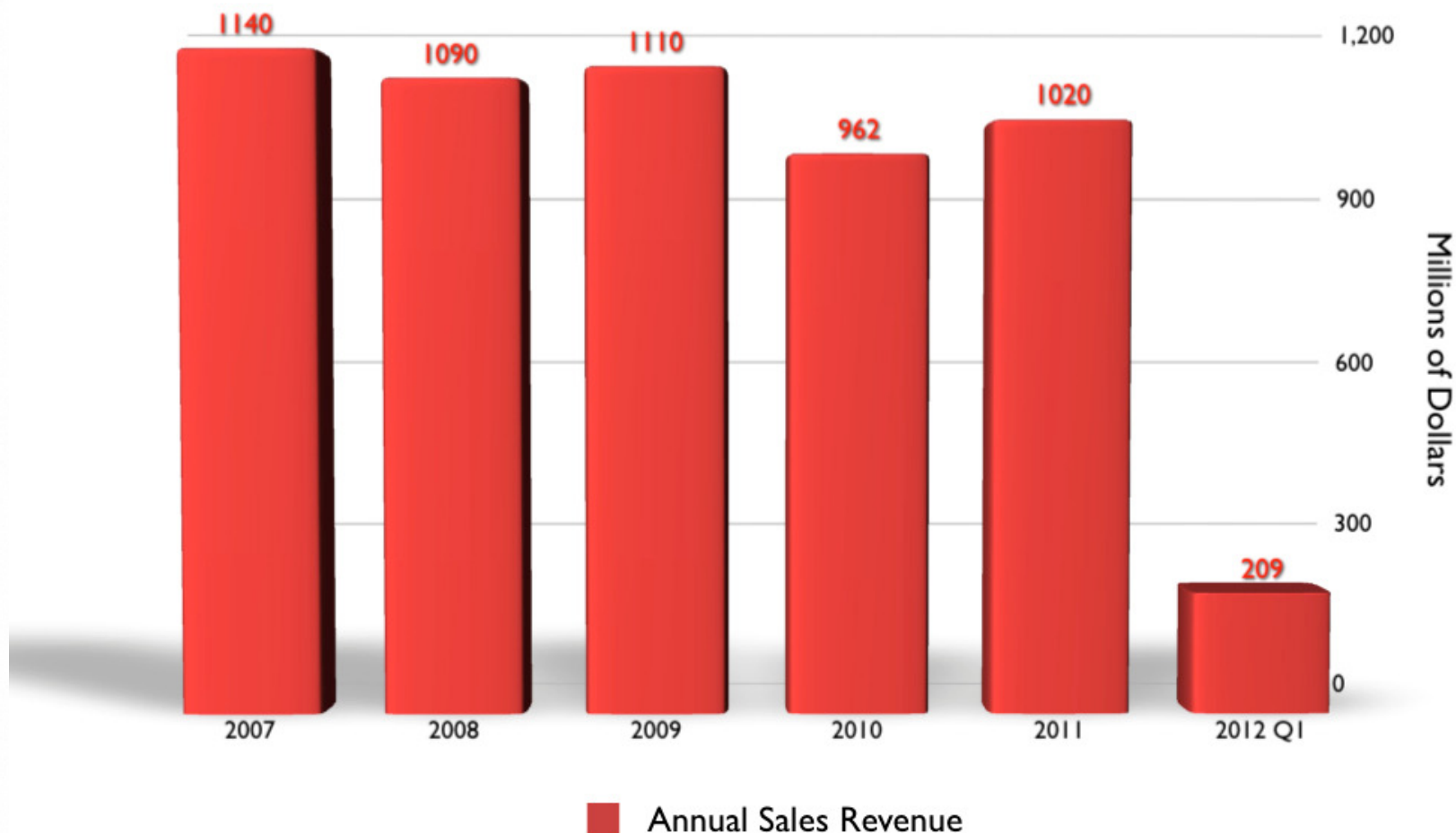
Strong Global Supply Chain Network

- Same-Day Delivery Service
- 7 warehouses in major markets:

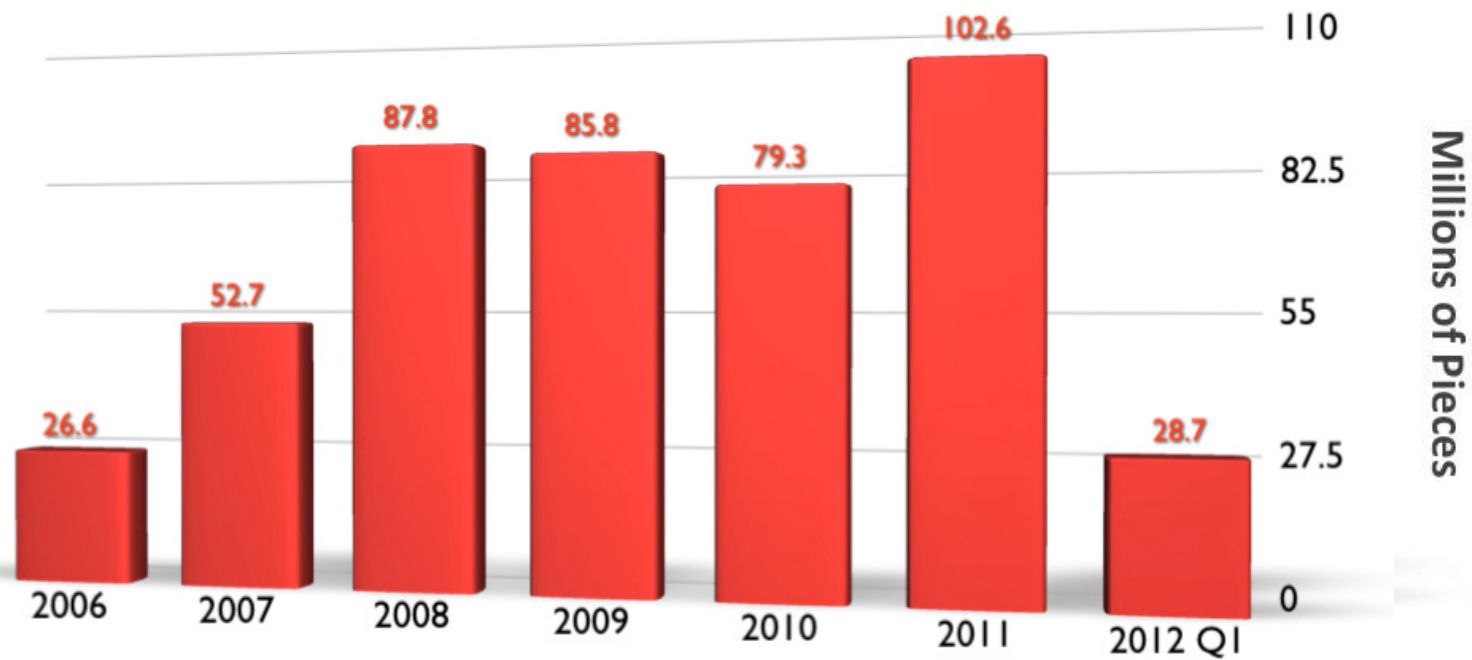
Taipei, Shanghai, Tokyo, Hong Kong, Seoul, Los Angeles, Rotterdam



Annual Sales Revenue

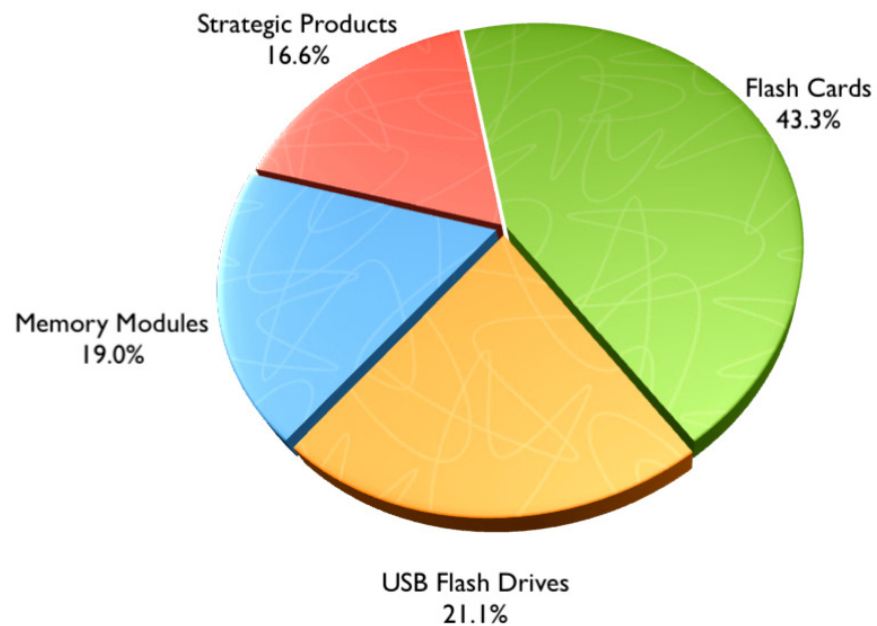


Annual Sales Quantity

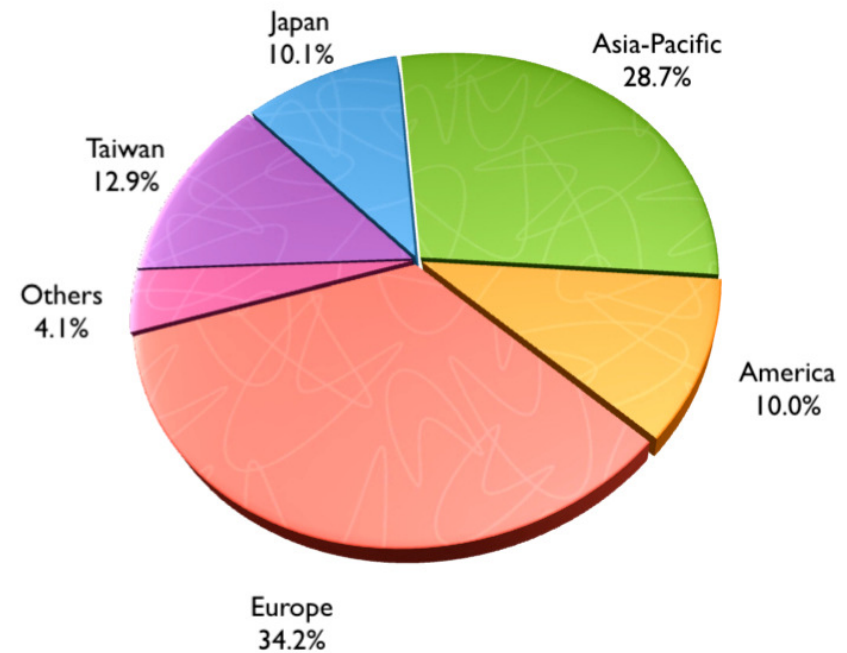


2012 Q1 Revenue Distribution

Breakdown by Product



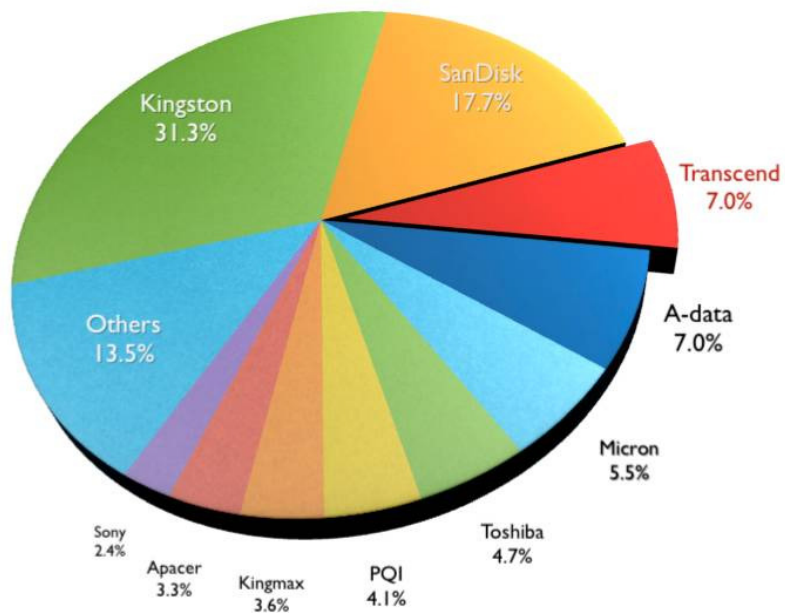
Breakdown by Region



2010 Worldwide Ranking

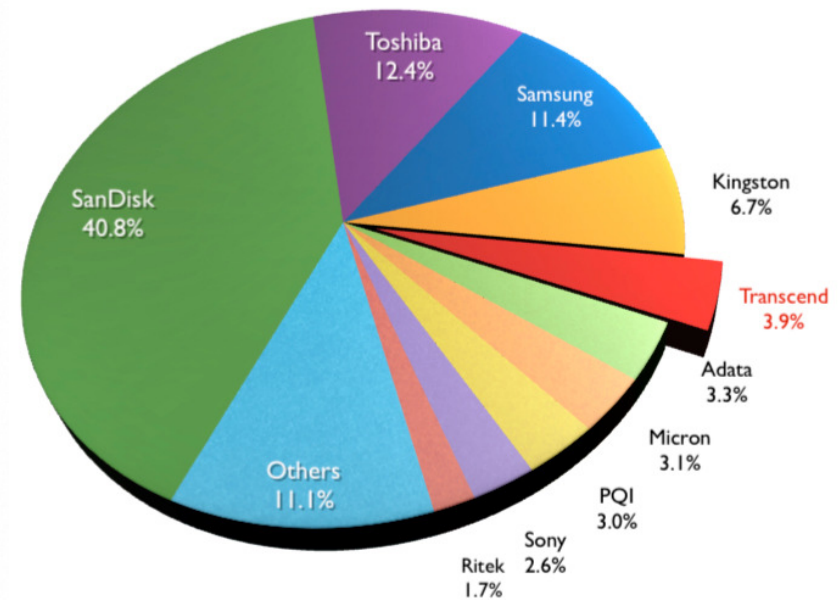
World's **No.3**

USB Flash Drive manufacturer



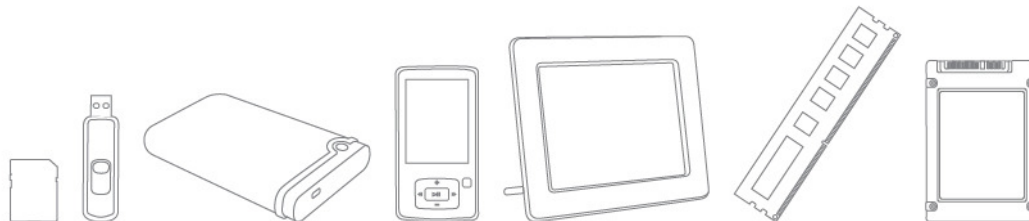
World's **No.5**

Flash Card manufacturer



Agenda

- Company Overview
- **2012 Q1 Financial Statements**
- Product Portfolio
- Marketing Activities
- Transcend Strengths
- Q&A



Consolidated Income Statement

Unit: NT\$億元

	1Q12	4Q11	QoQ%	1Q11	YoY%
Sales	61.98	71.54	-13.4%	80.48	-22.99%
Gross Profit	11.14	14.69	-24.2%	13.05	-14.6%
Gross Margin	18.0%	20.5% ✓	-2.56%	16.2% ✓	1.8%
Operating Expense	3.53	4.99	-29.26%	3.79	-6.86%
Operating Profit	7.62	9.70	-21.4%	9.26	-18%
Operating Margin	12.3%	13.6% ✓	-1.26%	11.5% ✓	0.8%
Non-Operating Income	-0.69	-0.80	14%	0.41	-268.3%
Pre-Tax Profit	6.93	8.90	-22.1%	9.67	-28.3%
Tax Expense	0.76	1.71	-55.6%	0.80	-5%
Net Income	6.17	7.19	-14.2%	8.88	-30.5%
Net Margin	10.0%	10.1% ✓	-0.10%	11.0%	-1.1%
EPS(dollars/per share)	1.43	1.68		2.09	

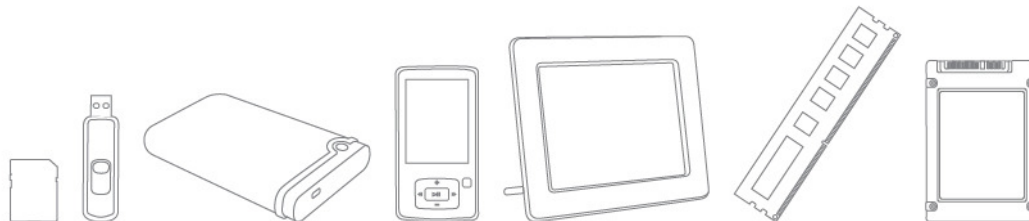
Consolidated Balance Statement

Unit: NT\$億元

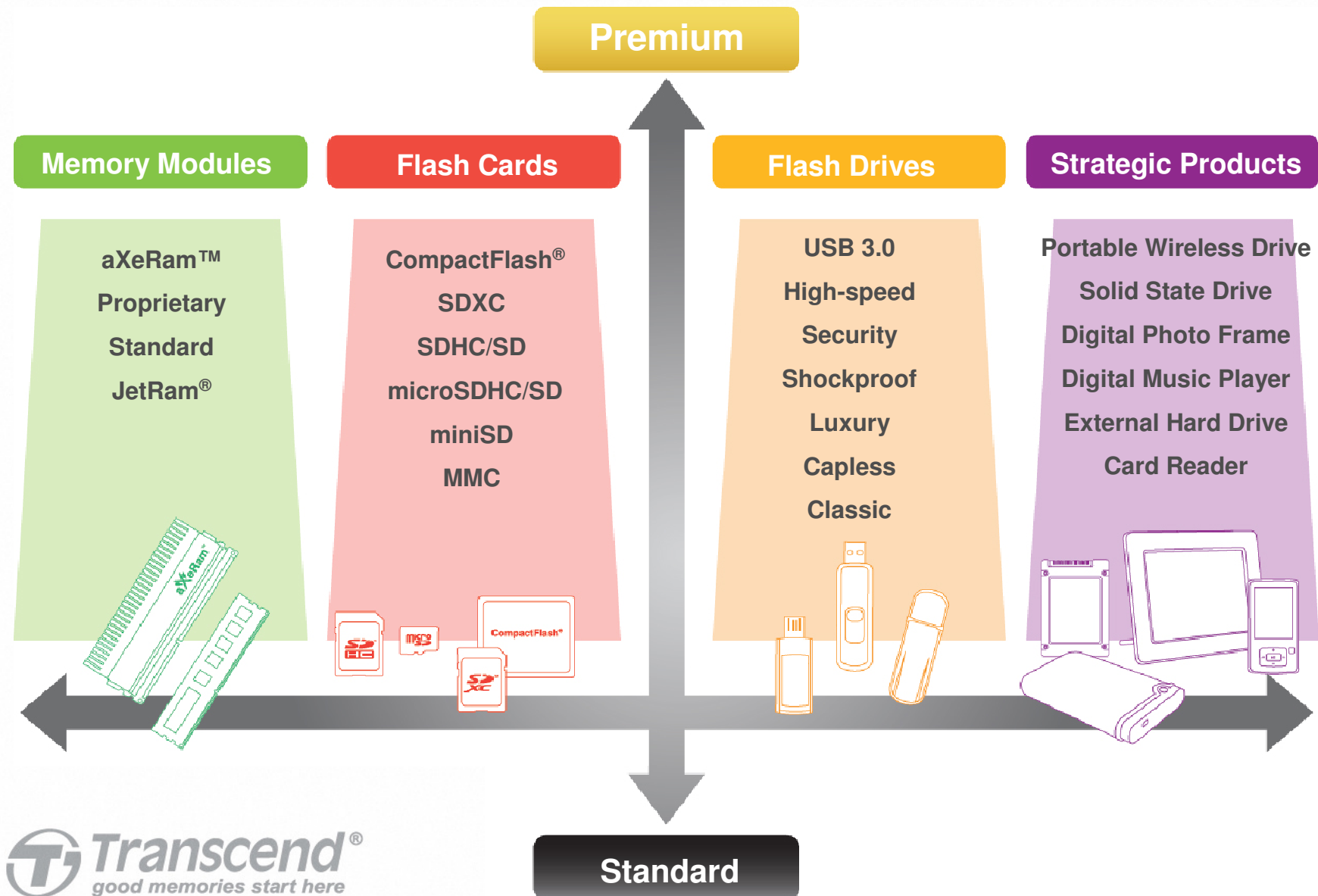
Selected Items from Balance Sheet	1Q 12		4Q 11	
	Amount	%	Amount	%
Cash & Marketable Securities	104.47	46.8%	97.08	43.8%
Account Receivable	22.64	10.2%	25.39	11.5%
Inventory	37.94	17.0%	45.02	20.3%
Current Asset	174.93	78.4%	172.78	78.0%
Fixed Asset	37.84	17.0%	40.52	18.3%
Total Asset	223.03	100.0%	221.43	100.0%
Account Payable	12.28	5.5%	17.13	7.7%
Current Liabilities	23.28	10.4%	27.62	12.5%
Total Liabilities	26.69	12.0%	31.15	14.1%
Total Shareholder's Equity	196.34	88.0%	190.28	85.9%

Agenda

- Company Overview
- 2012 Q1 Financial Statements
- **Product Portfolio**
- Marketing Activities
- Transcend Strengths
- Q&A



Product Portfolio



Flash Memory Everywhere

Industrial Applications

IT



Consumer Electronics

SATA III SSD



Capacity:
64-512GB

Performance:
Read up to 560MB/s, write up to 540MB/s

Perfect for Ultrabooks



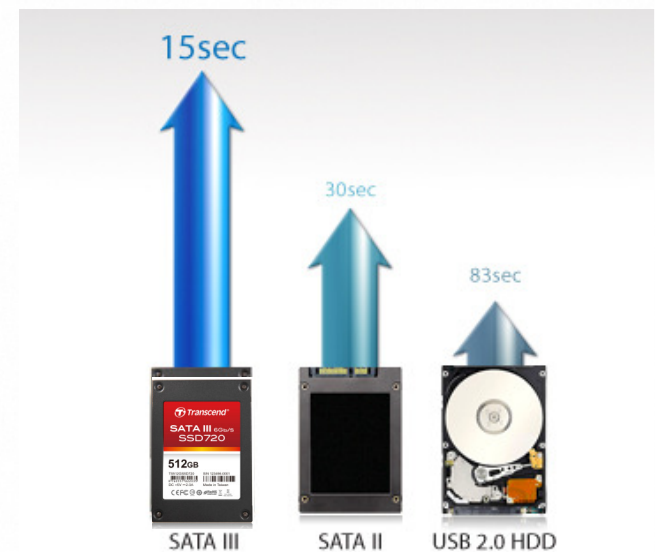
7mm Ultra-slim form factor

SSD720

- Next Generation SATA III 6Gb/s Interface
- Backwards compatible with SATA II / SATA I
- Powerful SandForce Controller
- Intelligent Block Management and Wear Leveling
- Build-in ECC protection for long data retention
- Supports NCQ (up to 32 commands)
- Supports S.M.A.R.T. and TRIM Command
- AES 256-bit Hardware Encryption
- Three-year Limited Warranty



Windows 7 Boot



Lightning-fast transfer
of full 4.7GB DVD

SLC SATA II SSD



Capacity: 16-64GB

Working Temperature

□ 0°C ~ 70°C

□ - 40°C ~ 85°C (Optional)

SSD500

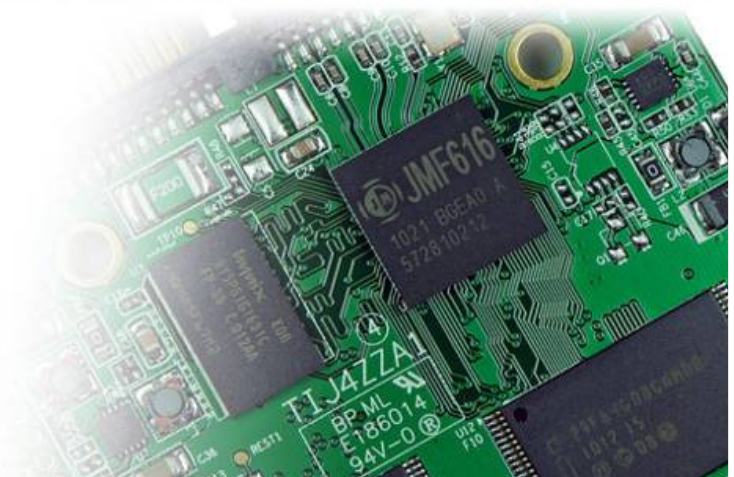
Durable SLC chip

100,000 erase/write cycles

Performance:

Read up to 260MB/s, write up to 230MB/s

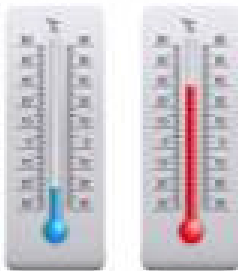
- Fully compatible with devices and OS that support the SATA II 3Gb/s standard
- Non-volatile Flash Memory for outstanding data retention
- Built-in ECC (Error Correction Code) functionality
- Wear-leveling algorithm
- Support Trim and NCQ command
- Support Hardware Purge function
- RoHS compliant



Industrial SATA II SSD



Capacities:
32GB / 64GB



Extreme Working Temperature
-25°C ~85°C



Long-term operation



Transportation system

SSD25S-MI

Performance:

MLC - Read up to 190MB/s, Write up to 100MB/s

- Built-in ECC and wear-leveling to ensure reliable data transfer
- Supports hot swapping in AHCI mode
- Supports Trim command
- Supports security, S.M.A.R.T, and HW purge functions (optional)

Portable Wireless Drive



32GB/64GB

StoreJet Cloud *Your Personal Cloud*

- Stream different content on 5 devices at the same time
- Supports iOS, Android, Windows, and Mac OSX
- Special App for iOS and Android devices
- Li-Battery supports 6hrs playback and 8hrs standby
- Connect to the Internet and StoreJet Cloud simultaneously
- Email files as attachments
- No need to transfer file formats



Connects up to 5 devices



iOS and Android Apps available

1.8" Portable USB 3.0 SSD



SSD 18C3

Performance:

Read up to 260MB/s, write up to 140MB/s

- SuperSpeed USB 3.0 and USB 2.0 connection options
 - One Touch auto-backup button
 - Dimensions: 98.7mm x 65.7mm x 17.45mm
- Weight : 70g



(64GB / 128GB)



One Touch Auto-Backup Button

Helps backup and synchronize data instantly.
Enabled by the bundled Backup Manager software.



2X FASTER

than USB 3.0 Hard Drives

USB 3.0 SSD
260MB/s

USB 3.0 HDD
115MB/s



mSATA SSD



Capacities:

SLC- 1GB / 2GB / 4GB / 8GB / 16GB

MLC- 16GB / 32GB / 64GB

Performance:

MLC - Read up to 140MB/s, Write up to 65MB/s

SLC - Read up to 100MB/s, Write up to 90MB/s

Form factor: MO-300A

Operating temperature: 0°C ~ 70°C

Dimensions: 50.8mm x 29.85mm x 4.85mm

MTBF: 1,000,000 hrs

MSA310 (MLC) MSA500 (SLC)

- 40bit/1KB BCH hardware ECC
- Compliant with SATA-IO specifications
- Fully compatible with the SATA 3Gb/s standard
- Supports AHCI mode, TRIM and NCQ commands
- Advanced S.M.A.R.T drive health monitoring
- Advanced Power Shield (built-in)
- Write protect & HW purge functions (built-in)



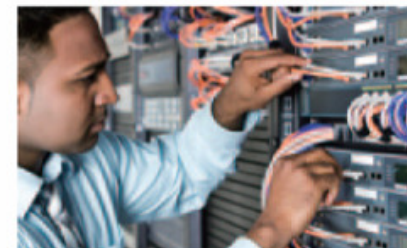
Tablet PCs



Vehicle computers

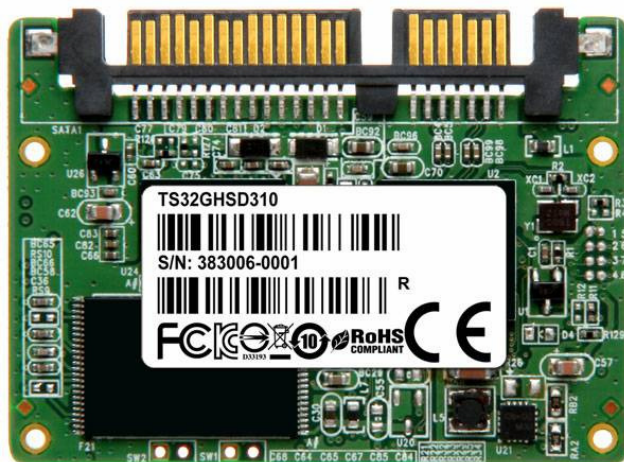


Surveillance system



Embedded storage applications

Half-slim SSD



Capacities:

8GB / 16GB / 32GB / 64GB

Performance:

MLC - Read up to 140MB/s, Write up to 65MB/s

SLC - Read up to 100MB/s, Write up to 90MB/s

Form factor: Half-slim MO-297

Operating temperature:

0°C ~ 70°C

-25°C ~ 85°C (Industrial grade, MLC)

-40°C ~ 85°C (Industrial grade, SLC)

Dimensions: 54mm x 39mm x 4mm

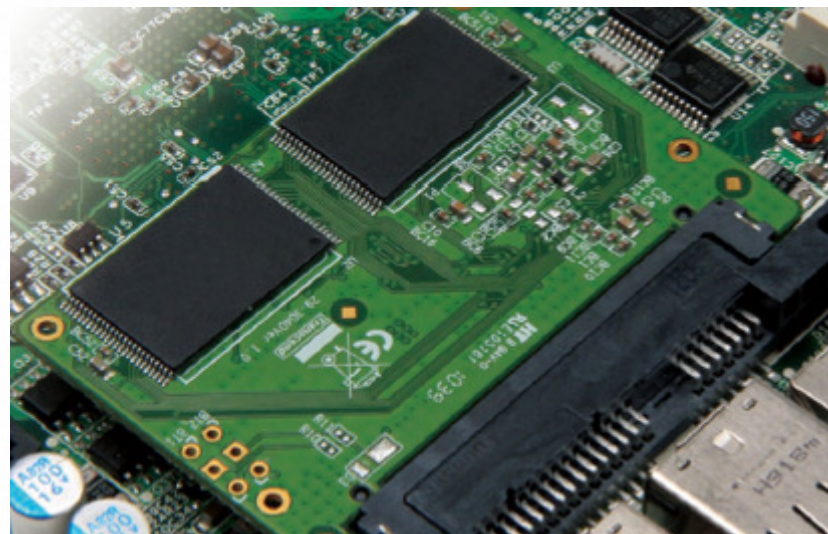
MTBF: 1,000,000 hrs



HSD310 / 310I

*70% **Smaller** than standard 2.5" form factor*

- Advanced global Wear-Leveling and Block Management for reliability
- S.M.A.R.T. (Self-Monitoring, Analysis and Reporting Technology)
- TRIM and NCQ (Native Command Queuing) support
- 64MB DRAM cache
- 40bit/1KB BCH hardware ECC
- Advanced Power Shield (built-in)
- Write protect & HW purge functions (built-in)
- SLC solution (Optional)



Flash Cards – Speed-driven



Ultimate Series

A great camera deserves a great card.

Whether your camera uses SD or CF cards, you can always find the right high-performance solution from our "Ultimate" series memory cards.



Model	SDHC Class 10 UHS-I	SDXC Class 10	SDHC Class 10	600X CF	400X CF
Transfer Rate (Max)	85MB/s	25MB/s	20MB/s	90MB/s	60MB/s
Capacity	8GB~16GB	64GB	4GB~32GB	8GB~64GB	8GB~64GB

SDHC Class 10 UHS-I Card



(8GB - 16GB)



16GB

	SDHC UHS-I	SDHC Class 10
Read	85MB/s	20MB/s
Write	45MB/s	18MB/s

Pro-level Cameras



Sony
α 77



Nikon
D7000 / D5100



Nikon
V1 / J1



Fujifilm
HS20EXR



Canon
550D / 60D



Olympus
E-P3

Flash Cards – Capacity-driven

SDHC™ V3.0

SDHC™
Class 10



(4GB - 32GB)

SDXC™
Class 10



(64GB)

microSDHC™ V3.0

microSDHC Class 10



(4GB - 32GB)

CompactFlash 4.1

CF600X



(8GB - 64GB)

Capacity Requirements

	SD	microSD	CompactFlash
2011 Avg. Quantity	7.73GB	3.67GB	11.3GB
2012 Expected Quantity	12GB	6GB	14GB

USB 3.0 External Hard Drives

StoreJet 25H3P



500GB-1TB

- 3-stage Shockproof
- 115MB/s ; 105MB/s

StoreJet 25M3



500GB-1TB

- 3-stage Shockproof
- 115MB/s ; 105MB/s

StoreJet 25A3



500GB-1TB

- Internal Suspension
- 115MB/s ; 105MB/s

3.5" StoreJet 35T3



2TB

- 130MB/s ; 125MB/s

3X FASTER
than USB 2.0 HDDs

USB 3.0 HDD
115MB/s



USB 2.0 HDD
38MB/s



USB 3.0 USB Flash Drives

JetFlash 700



Entry-level

- Read: 52MB/s
Write: 30MB/s
- 4GB-32GB

JetFlash 760



Capless Design

- Read: 52MB/s
Write: 30MB/s
- 4GB-32GB

JetFlash 780



Advanced Transfer

- Read: 140MB/s
Write: 40MB/s
- 8GB-16GB

4X FASTER

than USB 2.0 Flash Drive

USB 3.0 Flash Drive

140 MB/s

USB 2.0 Flash Drive

32 MB/s

Industrial Products



Industrial PC Applications

Transportation



Medical

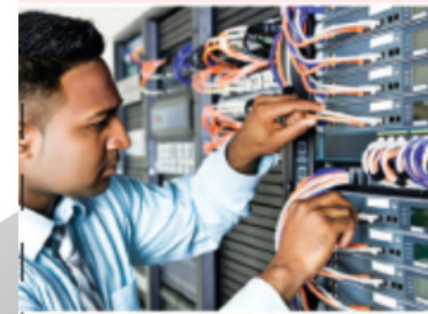
Automation



Military



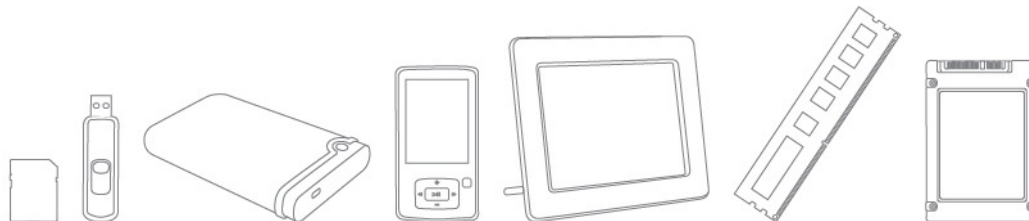
Gaming



Networking

Agenda

- Company Overview
- 2012 Q1 Financial Statements
- Product Portfolio
- **Marketing Activities**
- Transcend Strengths
- Q&A



Industrial Expositions



Germany



Japan



USA



USA



Taiwan Tradeshow



安控展
CompoSec



台北電腦應用展



資訊月



Sports Sponsorship in Schools

HBL - High school Basketball
(Dec 2011 ~ March 2012)

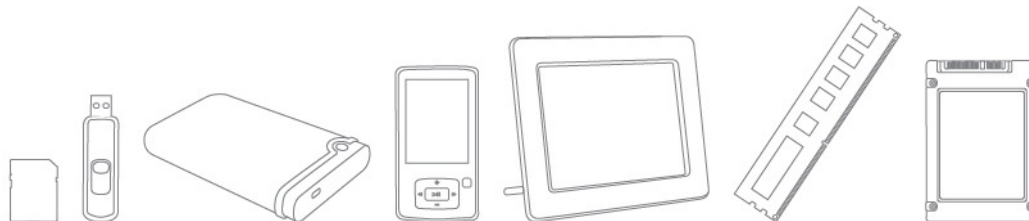
Total **55** live matches

Max. **211,600** viewers per game



Agenda

- Company Overview
- 2012 Q1 Financial Statements
- Product Portfolio
- Marketing Activities
- **Transcend Strengths**
- Q&A



Transcend Strengths

■ Brand Premium

- Local service, global presence
- Efficient R&D and Tech Support teams
- Diverse Marketing Activities

■ Niche Market

- Industrial products
- High-end/Specialty products

■ Virtual Warehouse

- Same-day delivery service
- 7 hubs worldwide

■ Effective Management



Growth Strategies

- Increase Production Capacity
 - Growing manufacturing capabilities
 - Manpower expansion plans:
 - 1500 persons in Taipei Headquarters
 - 2600+ persons worldwide

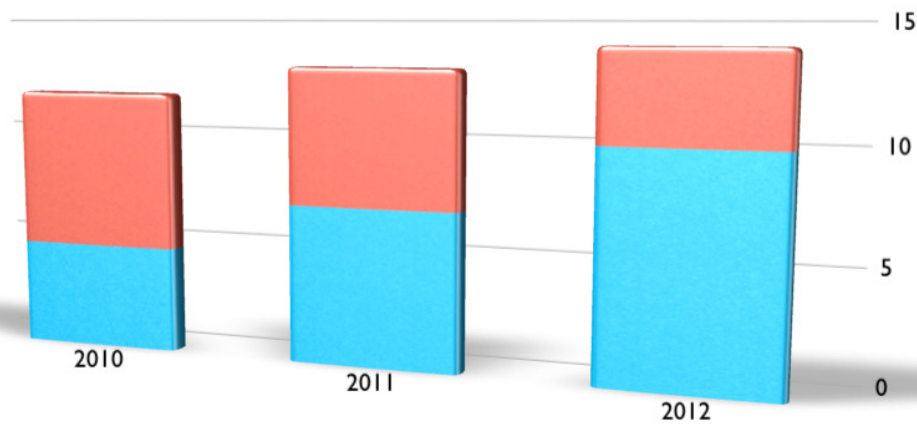


Shanghai, China



Taipei, Taiwan

(New factory completed in May 2011)



■ Taiwan ■ China (KKpcs/Month)



Q & A

